

*... arte permanente
2021*



the renaissance

denise &
beppe berna

*... arte permanente
2021*

THE RENAISSANCE



© denise & beppe berna
2021, bologna, italy



Antiquari Milanesi
ARTE È MILANO

all ... by
denise and
beppe berna



*Objets inanimés, avez-vous
donc une âme ...*

Alphonse de Lamartine



Antiquari Milanesi | ARTE È MILANO

PALAZZO DELLA PERMANENTE
via filippo turati, 34 - MILAN

stand n. 47
ground floor

october 27 – 31, 2021

dogon, n'duleri

Dogon, N'duleri

174Y

Large female figure.

17th / 19th century.
1694 - 1897 A.D. circa.
Radiocarbon C14.

H. cm. 50

*Prof. Rudolf Leopold, (1925-2010) collector, founder and director of the Leopold Museum in Vienna.
Adrian Schlag, Brussels.*







eastern luba

Eastern Luba

190Y

Large *Kibango* ceremonial staff.

19th century.

H. cm. 130

Viscount Théodore d'Ouvrier de la Seigne (1864-1950).

By descent kept in the family.

Pierre Dartevelle, Brussels.

Olivier Castellano, Paris.

European private collections.

Publication:

*« Une collection unique d'Art Nègre »,
in "Le soir illustré", Bruxelles, August
11, 1949, p. 8.*









senufo

Senufo

167Y

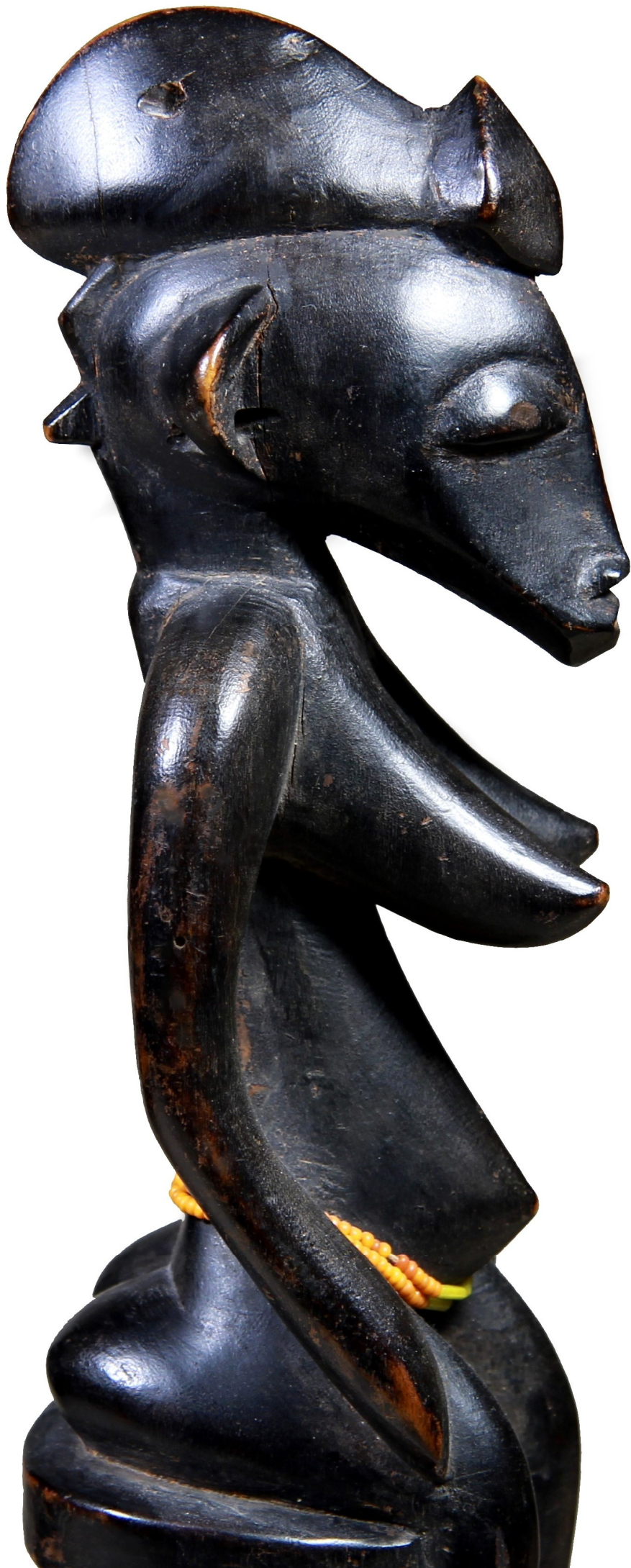
Female statuette of the
Master of arched breasts
(Beppe Berna).

Early 20th century.

H. cm. 27,5

*Josef Mueller (1887-1977),
Solothurn.
Barbier-Mueller Museum,
Geneva, until 1979.
Charles Milton (1911-1993),
artist and designer, London.
Didier Claes, Brussels.
European private collections.*







luli, leti

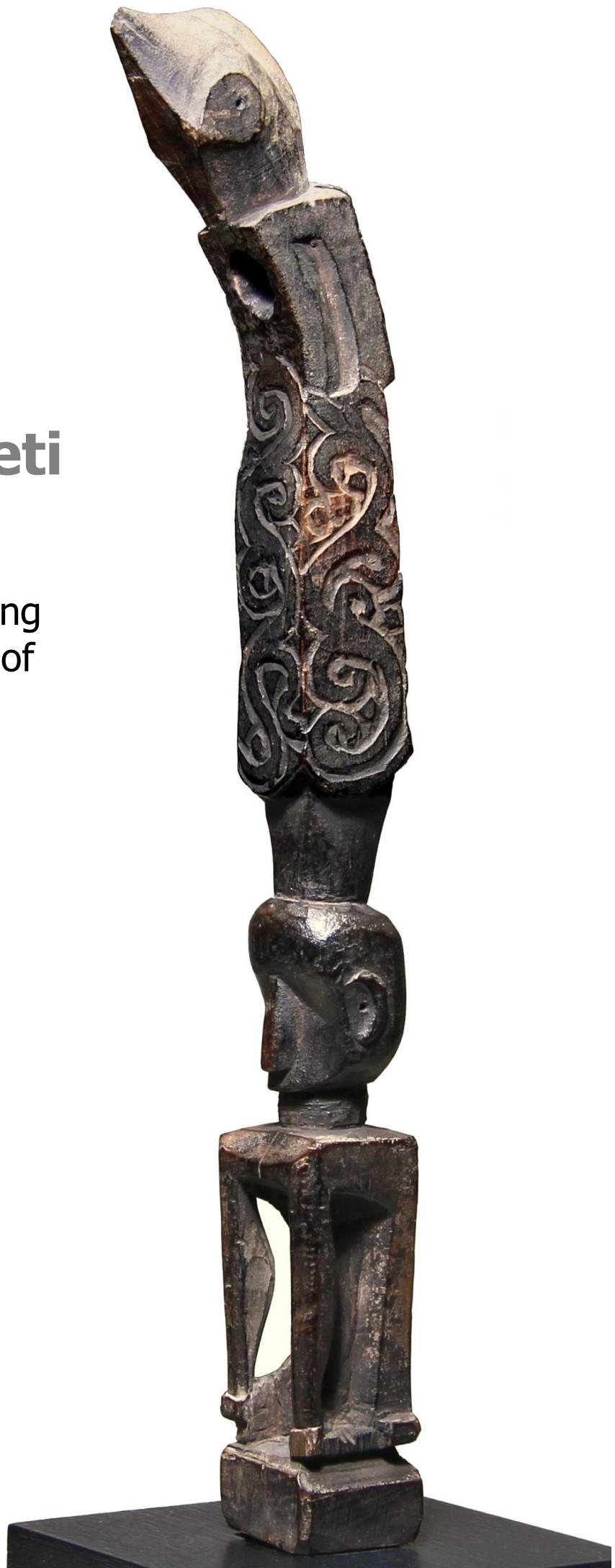
Lakor Island, Leti

181R

Very rare statuette depicting *Iuli*, the founding mother of the clan.

H. cm. 30 without tenon.

*Angelo Attilio Attili, Parma.
Denise and Beppe Berna,
Bologna, early 1980's.*







songye



Songye

183Y

Nkisi, male magic figure.

H. cm. 26,3

*Old Belgian collection.
Marc Leo Felix, Brussels
Adrian Schlag, Brussels
Berry de Bruijn collection,
Holland.*







dan, diomandé



Dan, Diomandé

199Y

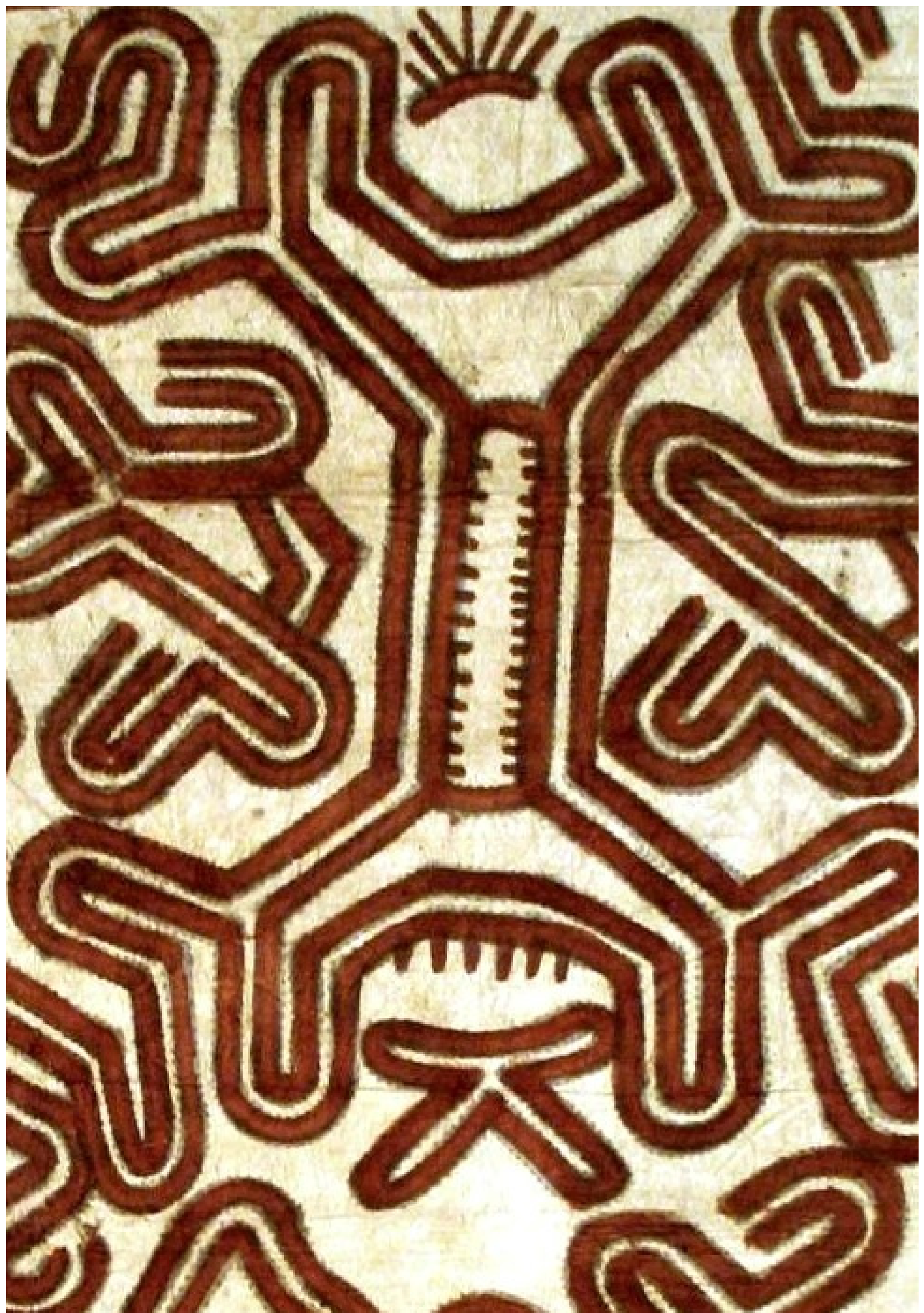
Gunye ge, ceremonial
racing mask.

H. cm. 27,5.

*Old English collection.
Private collection, Paris.*



*tuffi village,
collingwood bay,
oro province*





**Tuffi village,
Collingwood Bay, Oro Province**

154R

Very rare ritual *tapa* with anthropomorphic motifs.

Cm. 155 x 86.

Collected in 1957 in Tuffi, on the occasion of a wedding.

bembe



Bembe

128W

Ancestor figure of the
*"Masters of smiling
bearded men"*
(Beppe Berna).

Early twentieth century.

H. cm. 23,5

*Everett Rassiga, New York
(1921 - 2003).
American private collections.*







*egyptian sculptor's
model*



Ancient Egypt

132S

Limestone sculptor's model.

30th dynasty / Ptolemaic, 380/30 B.C.

Cm. 19 x 14,8

*Old Belgian collection.
Galerie Harmakhis - Jacques Billen, Brussels.*

Exhibited: TEFAF Maastricht, 2007.



Pharaonic portraits,
side b.



kusu



Kusu

101Z

Magic figure *Kakudji*.

H. cm. 31,5.

*Old Belgian collection.
Marc Leo Felix, Brussels.
Private collection, Paris.*





dogon,

bondum (tintam)

Dogon, Bondum (Tintam)

198Y

The *Nommo* with raised arms.

16th / 17th century.

1514 - 1650 AD approx.

Radiocarbon C14.

H. cm. 48,5

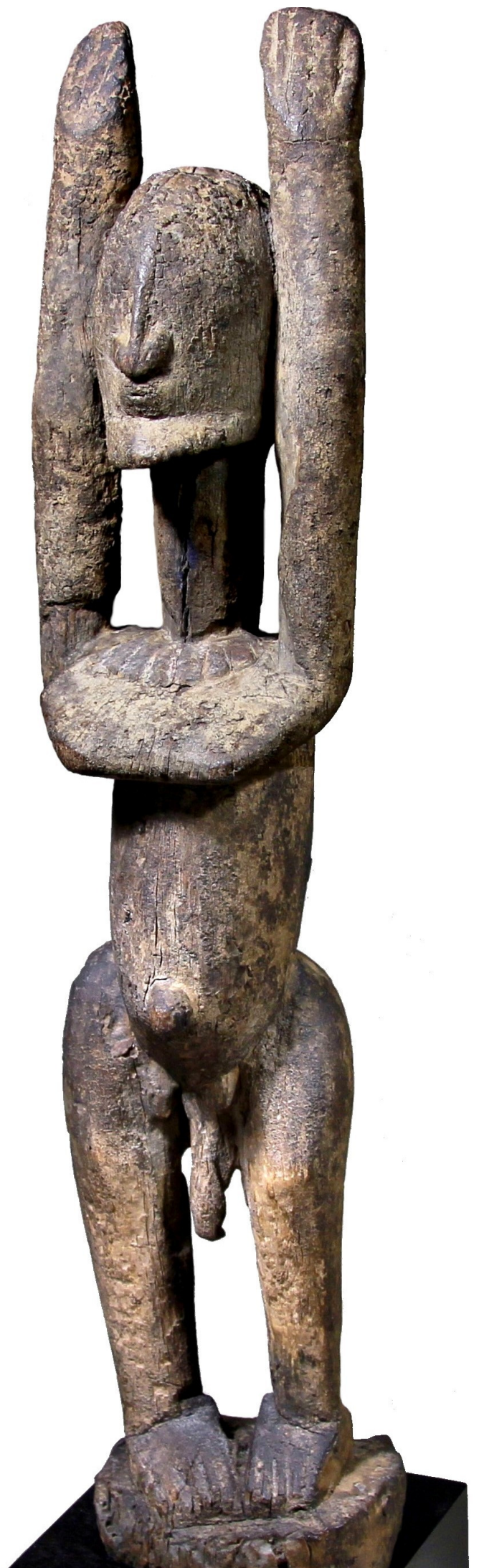
Pierre Langlois, Lille.

Jean - Michel Huguenin, Paris.

French private collection.

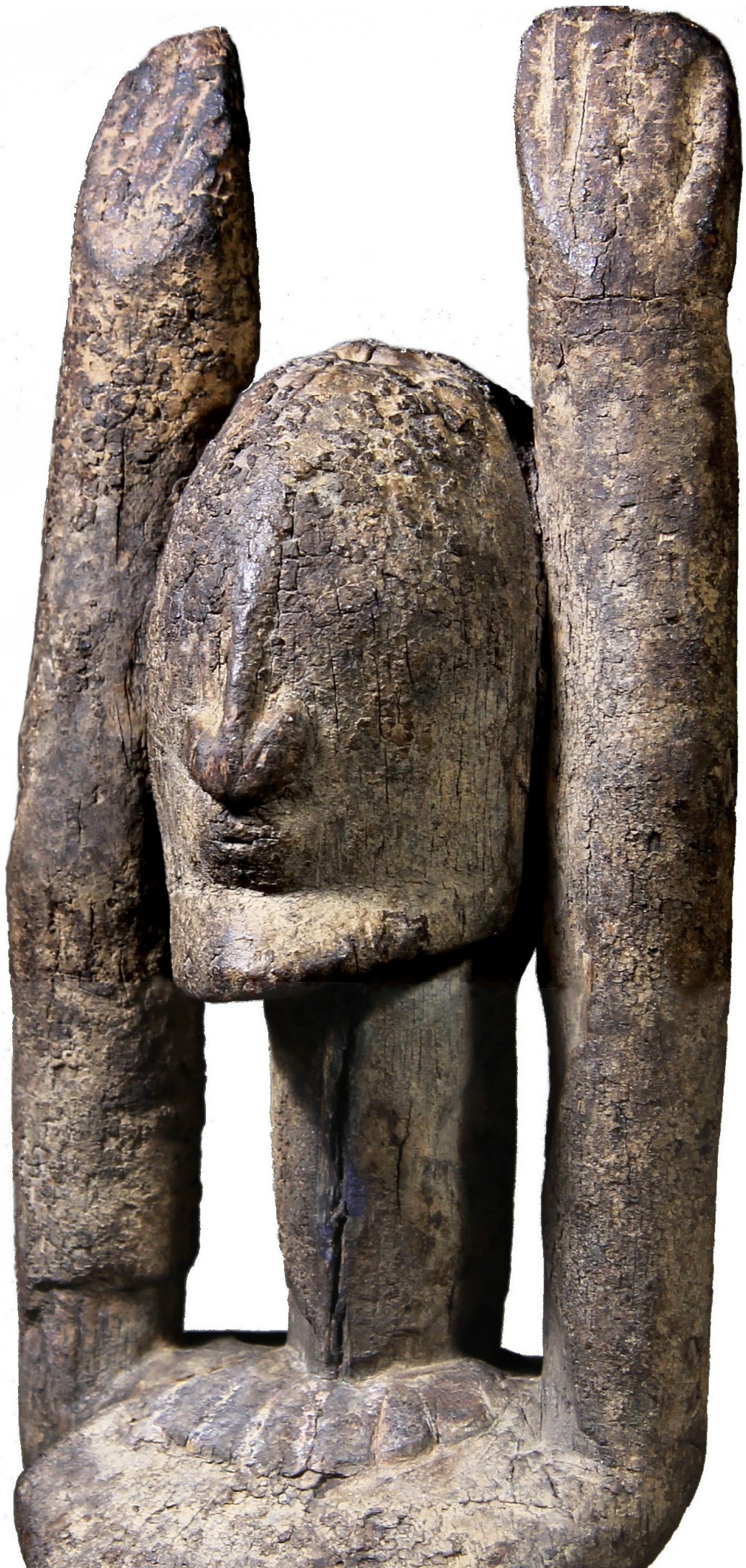
Guilhem Montagut, Barcelona.

Adrian Schlag, Brussels.









kongo, yombe



Kongo, Yombe

187Y

Devotional statue of royal
maternity.

19th century.

H. cm. 49,5

*Collected by a Belgian
colonial between 1903 and
1905.*

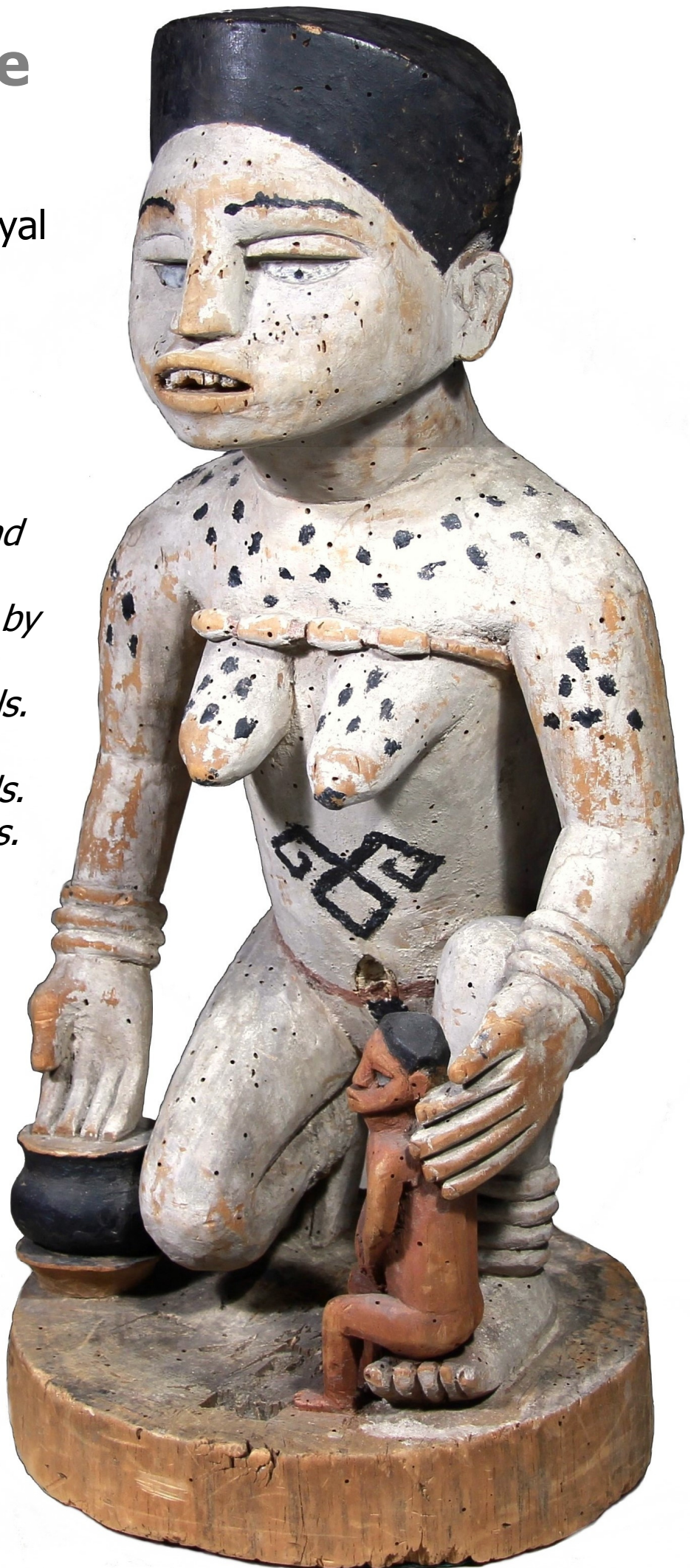
*Belgian private collection by
descent.*

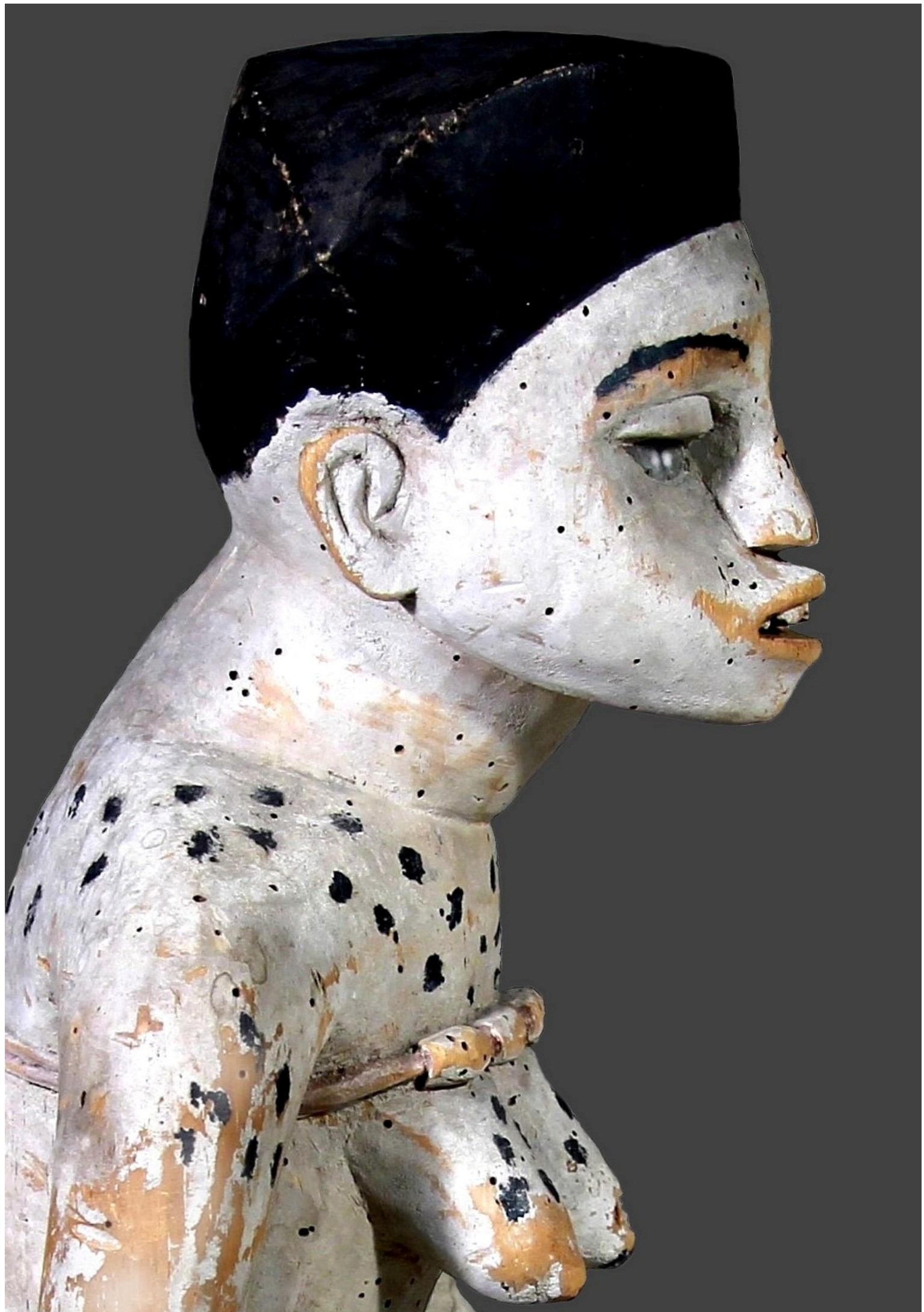
Patrick Mestdagh, Brussels.

Didier Claes, Brussels.

Private collection, Brussels.

Pierre Dartevelle, Brussels.





kongo, vili



Kongo, Vili

184Y

Nkisi, statue with a magical – religious function.

Late 19th / early 20th century.

H. cm. 23

Collected in situ between 1922-1937 by Antoine Autru (1892-1996).

Spanish private collection. Mercedes and David Serra, Barcelona.

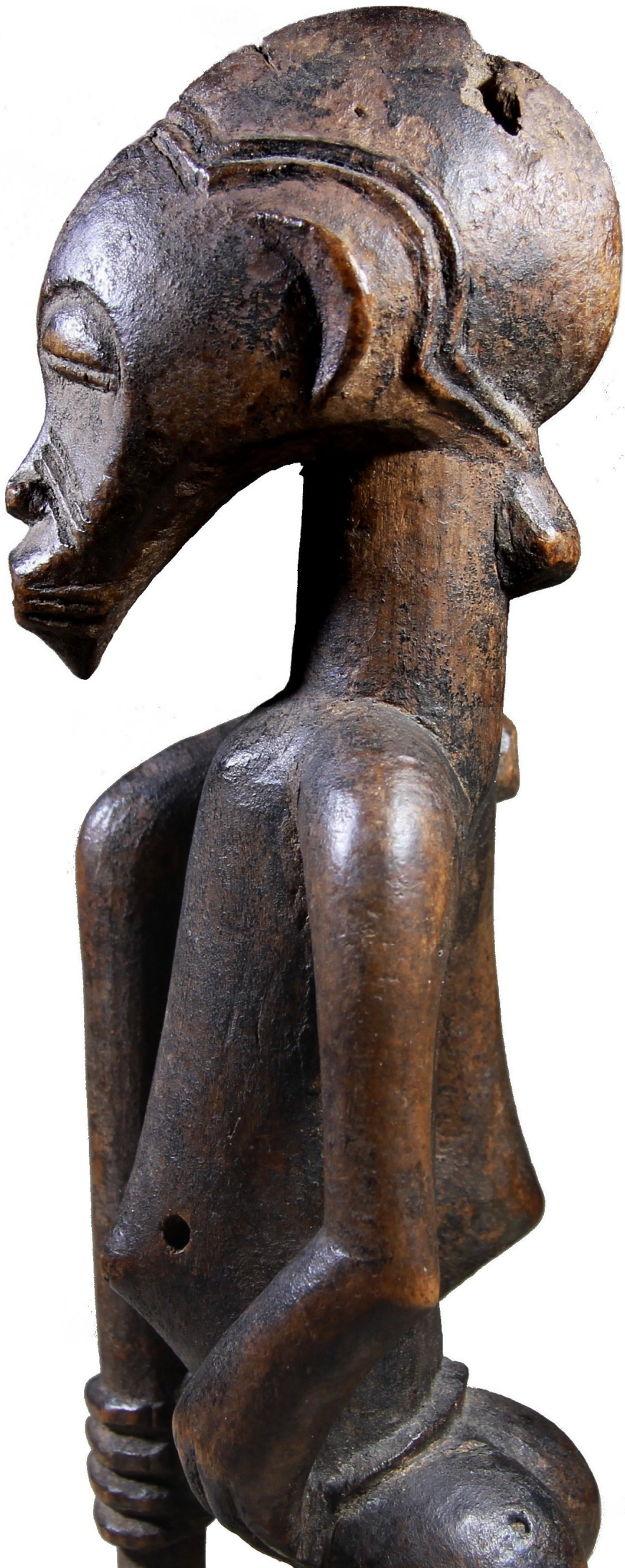
*Published:
Pages 46 and 47 in
"Imaginaire Tribal 2019",
Etnic Kumbi Saleh, Barcelona*







senufo



Senufo

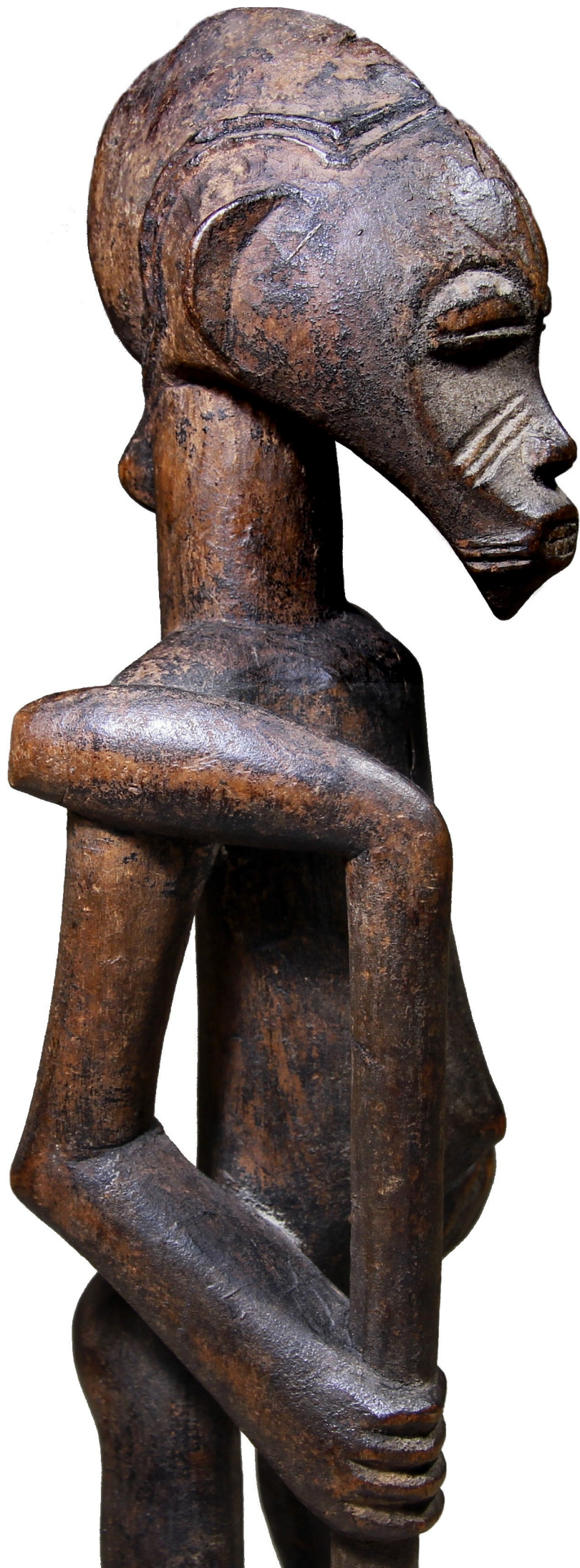
193Y

Figure of an idealized ancestor.

Masterful work of the
*"Master of the
maternity Salanon"*
(Beppe Berna).

H. cm. 36,5

*Maurice Nicaud, Paris.
French private collection.
Eric Hertault, Paris.
Adrian Schlag, Brussels.*









egyptian naqada vase

Egypt Predynastic

197V

Large ceramic vase
black topped.

End Naqada I / beginning
Naqada II.
3600 BC circa.

T/L test.

H. cm. 24,5.

*Old French collection.
Italian private collection.*





northern hembra



Hemba

100Z

Kabeja, large magical
figure gianiform.

Northern Hemba style.

H. cm. 39,5.

*Allan Gerdau (1899-1986),
New York.*

*Jeffrey T. Griffin, Bethesda,
Maryland.*

*Mireille and James Lévy, New
York.*

Olivier Castellano, Paris.







dogon

Dogon

192Y

Door of the
granary /
sanctuary of the
Hogon.

H. cm. 51

Late 19th / early
20th century.

*French private
collections.
Olivier Castellano,
Paris.*





mochica

Mochica IV

148Y (1015)

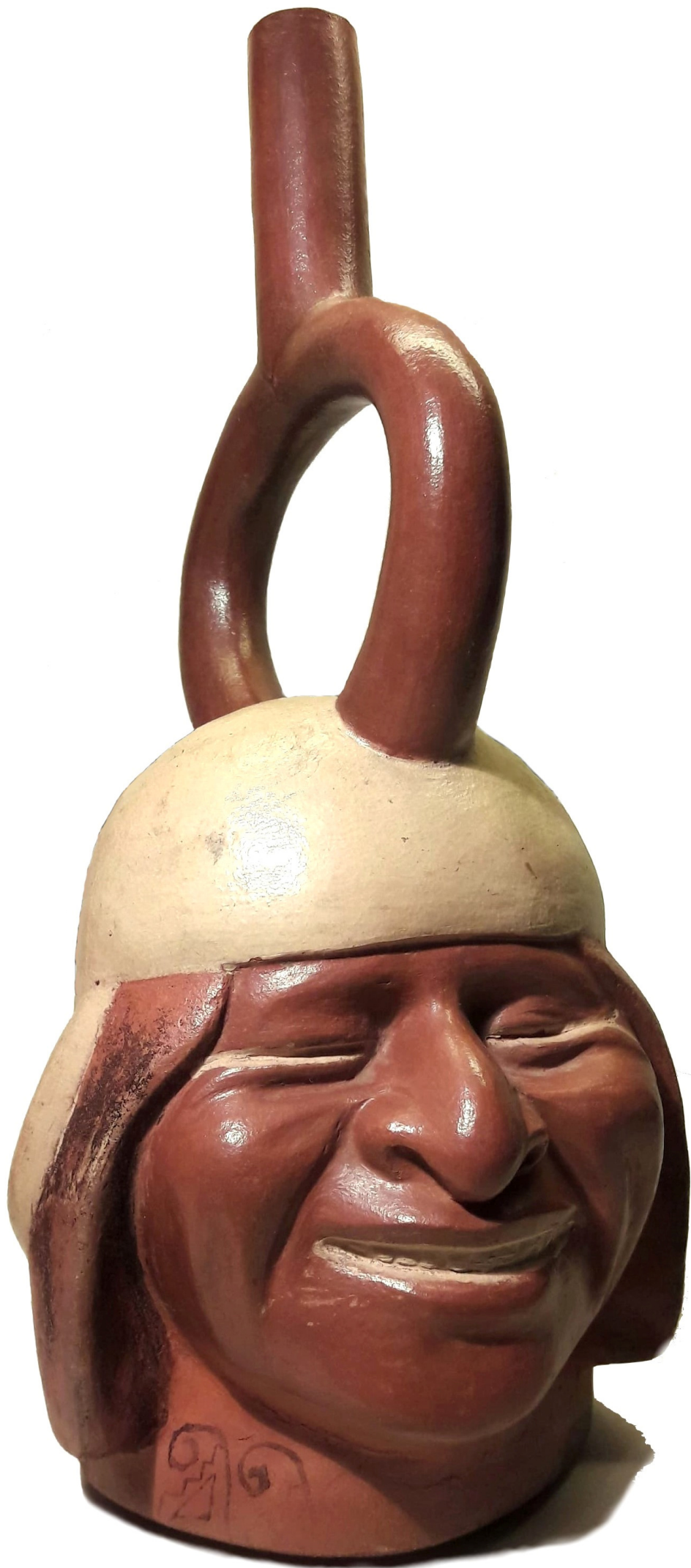
Extremely rare portrait vase of a *sonriente* dignitary by the ***Master of the laughing man***" (Antonio Aimi).
Intact.

450/550 d.C.
T/L test.

H. cm. 27,5

*From the collection of a French nobleman (1950's).
Berna Family Collection until the late 1980's.
Denise and Beppe Berna, Bologna.*







baule



Baule

186Y

Blolo bian, the spouse of
the afterlife.

Late 19th century.

H. cm. 51,2

*Maurice Nicaud Collection
(1911 – 2003), Paris.
French private collection.
Eric Hertault, Paris.*





chokwe

Chokwe

105Z

Figure of ancestor.

Early 20th century.
Expansion style.

H. cm. 27

*William Brill, New York.
Didier Claes, Brussels.
Belgian private collection.
Mercedes and David Serra,
Barcelona.*

*Published:
Pages 80 - 82 in "Imaginaire
Tribal 2021", Galeria David
Serra, Barcelona.*







*dogon, n'duleri,
tintam infl.*

Dogon, N'duleri, infl. Tintam

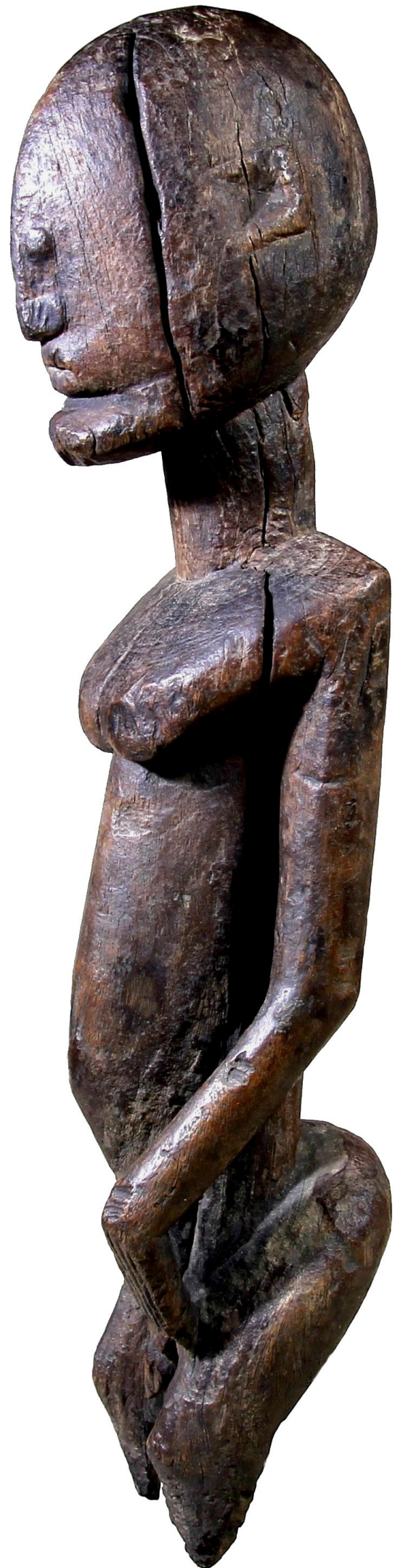
195Y

Rare hermaphrodite figure
depicting the *Nommo*.

19th century or earlier.

H. cm. 49

Michel Gosse, Paris.
Helmut Zake, Heidelberg
Adrian Schlag, Brussels.







tsogho



**Tsogho,
infl. Sango**

163W

"White" mask.

H. cm. 33

*Collected in situ by
Edward Klejman,
1960's.
Denise and Beppe
Berna, 1984.
Italian private
collection.*



baule



Baule

185Y

Blolo bian, the spouse
of the afterlife.

Early 20th century.

H. cm. 42

German private collection.

Didier Claes, Brussels.

French private collection.





senufo



Senufo

188Y

Tefalapica, rare ritual stick of the "*Master of the woman in the Barbier-Mueller*" (Beppe Berna).

Early 20th century.

H. cm. 24,5 (figure)

H. cm. 103

*Old English collection.
Didier Claes, Brussels.*





southern igbo

Southern Igbo, Owerri / Mbaise

191Y

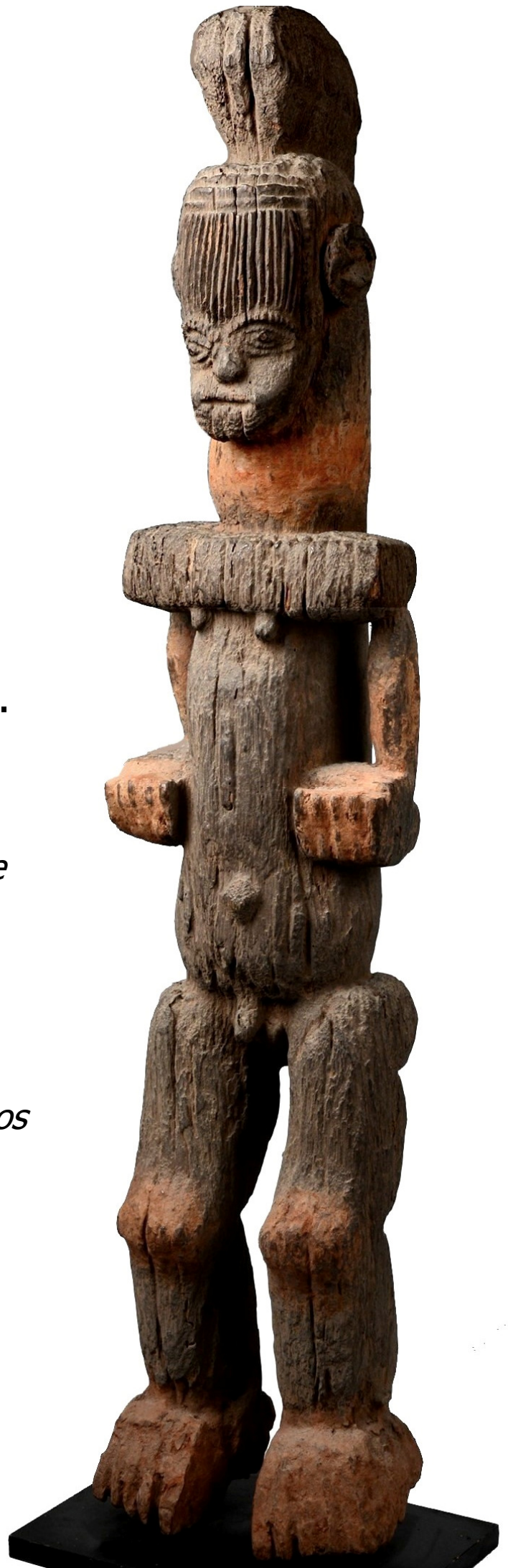
Agbara or *Alusi*.
Very old male figure.

Late 19th / early 20th century.

H. cm. 94

*Collected in the 1960s by Philippe
Guimiot, Brussels.
Stefan Herzog, Munich.*

*Published on p. 26 of "Eloquent
Silence – Archaic Animistic
Cultures" by Stefan Herzog, photos
by Gisela Schenker.*







kongo, yombe





Kongo, Yombe

106Z

Nkisi statuette with
magical - religious function.

Early 20th century.

H. cm. 27,3

*Loed van Bussel, Amsterdam.
Dos & Bertie Winkel Collection,
Delft.*

*Mercedes and David Serra,
Barcelona.*

*Published:
Pages 58 - 61 in "Imaginaire Tribal
2021", Galeria David Serra,
Barcelona.*



... for more information: berna@debberna.it

Denise e Beppe Berna

arte tribale - arte archeologica
tribal art - ancient art

Via Borgo S. Pietro 43 - 40126 Bologna, Italy

Phone +39 051 253175

su appuntamento - by appointment only



copyright © d. & b. berna 2021